

**vesta**

CAD-171

Addressables control panel
VESTA Series

Description

The new CAD-171 addressable control panel from the VESTA series offers the benefits of simple and flexible programming, along with advanced features such as remote connectivity and a 7-inch touchscreen.

VESTA provides the ideal solution for fire detection, as it is flexible enough to meet the requirements of any installation size and adapt to new designs quickly and easily.

VESTA is the result of the experience, feedback, and suggestions from our customers, installers, end users, engineering firms, and fire departments in various countries. VESTA combines technological and conceptual innovation in its design and user interface, making the installation, commissioning, and maintenance of the fire detection system easier than ever.

The CAD-171 control panel, in addition to the high-performance features of the VESTA series, incorporates new features such as LOOP+ and POWER LINK, available only in DETNOV's new-generation equipment. All of this combines to offer a highly technological product that provides greater diagnostic capabilities, increased loop and system power, and efficient data management without sacrificing ease of use, but

The new generation of VESTA control panels represents the latest generation of fire detection control panels with the following features:

Attractive and elegant design

With a 7-inch high-resolution color touchscreen and an intuitive menu-based interface, VESTA is exceptionally easy to use; you can quickly access detailed information, view reports, and perform a wide variety of operations directly from the screen.

High performance

Inside the control panel, we have incorporated state-of-the-art processors with the latest technological advancements, enabling faster, smarter processing and greater operational flexibility. All necessary configurations for the installation can be performed, and operations can be programmed between input and output devices across areas, zones, points, or groups.

Map Management

It allows for the integration of maps for a more visual and intuitive management of the installation. With this functionality, floor plans of the protected areas can be loaded, facilitating the quick location of events or alarms. This not only improves the overall understanding of the system but also streamlines decision-making by offering a clear graphical representation of each monitored sector.

The T-Network of VESTA series control panels allows the system to be expanded to a total of 64 nodes, capable of controlling over 512,000 devices depending on the composition and type of networked control panel. This capacity provides great flexibility and scalability, allowing the system to be scaled as your facility's needs change and grow—it can grow alongside them.

Easy installation and maintenance

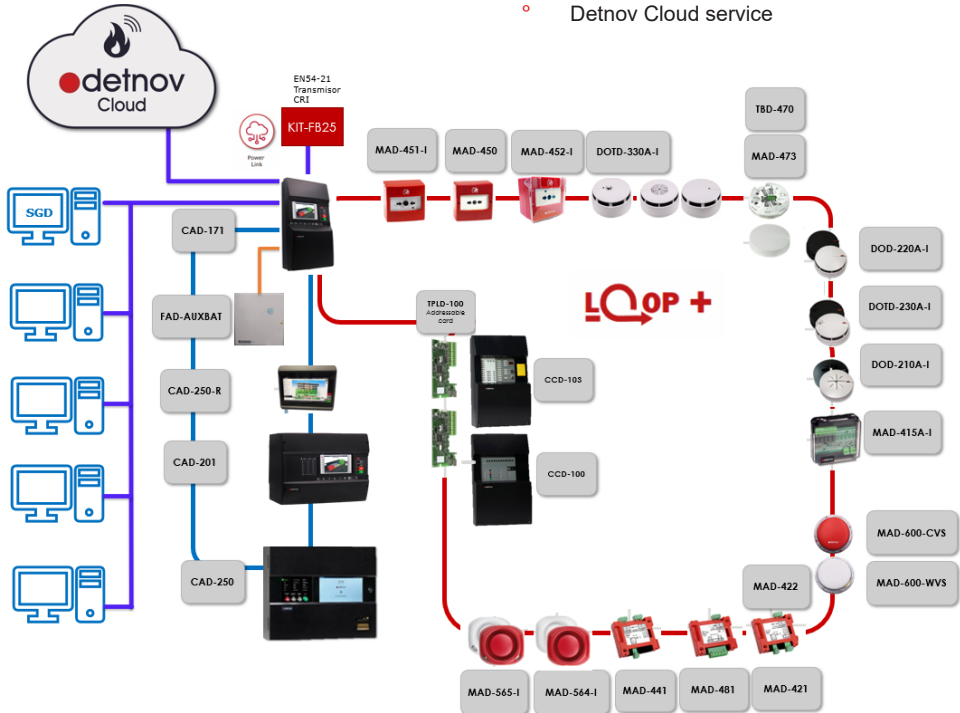
The control unit's motherboard features an Ethernet port, which opens up a wide range of possibilities; one of the most notable is remote programming, which can save on travel costs for commissioning and maintenance personnel.

Open integration for all systems

We use open protocols to integrate with other systems and devices, allowing interaction with other systems installed in buildings (HVAC, security, lighting, etc.). For this purpose, it features a native multipurpose Ethernet port.

Features

- 7-inch color touchscreen
- USB port for programming
- 2,000 programmable zones
- 250 network areas
- 1,000 groups
- 1,000 virtual modules
- 2,500 special modes
- 100,000 control lines
- Historical log of 1,000,000 events
- Maximum of 250 devices per loop
- Graphical layout management
- Native multipurpose Ethernet port
- EN 54-2 and EN 54-4 certified
- Modbus IP
- Transmission to ARC with the KIT-FB-25
- Compatible with SGD-151 graphical software
- Detnov Cloud service



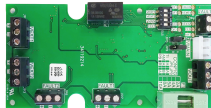
Technical Specifications

Central		
Main power supply voltage:		Switchable 110–230 VAC 50/60 Hz
Internal power supply:		150 W
Charger:		1.5 A temperature-compensated
Standby power consumption:		260 mA @ 28 VDC @ 20°C (2 cells)
Battery capacity:		2 x 12 Ah
Loops:		
	Maximum number of loops:	2
	Maximum number of elements:	250 per loop
	Maximum load:	750 mA
	Maximum loop length:	2 km
	Maximum cable strength:	44 Ω
	Maximum cable capacity:	500 nF/km
T-Network		T-Network. Integrated. Up to 64 nodes
Siren outputs:		2,
	Maximum load:	,500 mA per output
	Delay settings:	Via software
Voltage-free relay outputs:		10 A at 30 VDC
24V auxiliary output:		24 VDC 500 mA
Connectivity:		RJ45 Ethernet port
Programming:		USB-B or RJ45
Serial ports:		1 RS485 to CRI transmitter
Environment:		
Operating temperature:		From -5°C to 40°C
Relative humidity:		95% non-condensing
IP rating:		IP30
Physical characteristics:		
Dimensions:		270 mm x 436 mm x 125 mm
Weight:		
	Without batteries:	2.57 kg
	With NP12-12 batteries:	9.28 kg
Material:		ABS V0
Color:		Black
Certification:		
		EN 54-2, EN 54-4
Certificate No.:		0370-CPR-7603

Accessories



KIT-FB25



FAD-AUXBAT